

SSD Design Aptitude Test

The SSD DAT is not designed to see how smart you are, what facts you know, or how well you can draw.

It is aimed at looking at your creative potential, and your abilities related to cognizance, perception, aesthetic awareness, empathetic understanding and sense of ethics.

Creativity is more than the ability to draw, it is about the way you think, so if you feel you cannot draw very well, it does not limit your ability as a potential designer. You will learn the skills you need to become a creative practitioner in the various streams of design offered at SSD.

Just follow the questions below and write as you feel. Wishing you every success

Professor Radhika Roy
Dean
Sushant School of Design

* Required

1. **Email address ***

2. **Name ***

3. **Date ***

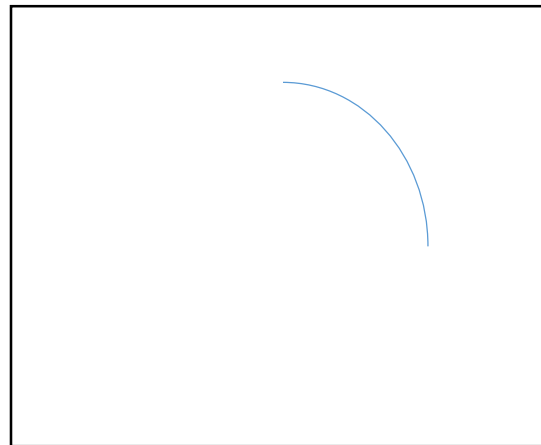
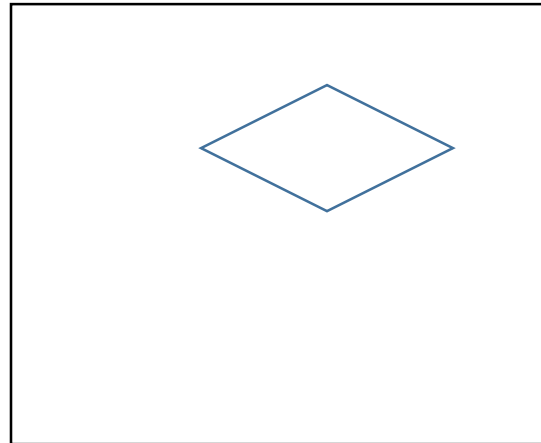
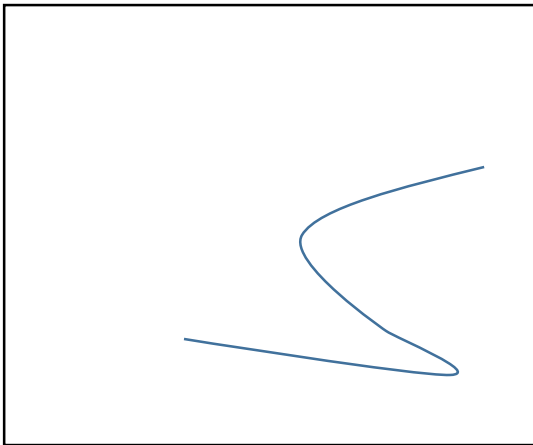
4. **Age ***

5. **Telephone No. ***

6. **Home Residential Address ***

1. COGNITIVE CONNECTIONS

In the boxes below, complete the drawing such that it illustrates something realistic. Please caption the drawings.

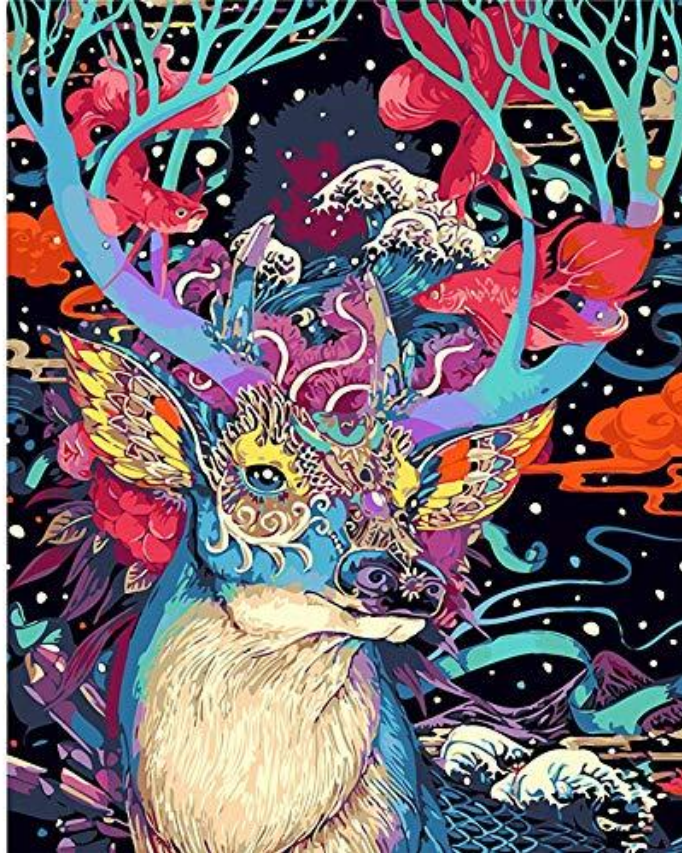


2. VISUALISATION

Imagine yourself as an item of food. Draw the item of food and list its attributes that are like you. Create an advertisement for the food item.

3. PERCEPTION

Imagine the picture below is the illustration for a story. Write the story briefly in a single paragraph.



4. EMPATHY

Look at the product displayed below. Who do you think will use it and why?



5. REPRESENTATION

Take any object out of your bag, and draw it. Label all the materials that object is made of. Describe its use and how it works. Explain how its shape and materials are appropriate for its use.

6. COMPARISON

Look at both the images below. What do you think they represent? Which do you prefer and why?

